

CROPSEY'S ADDITION

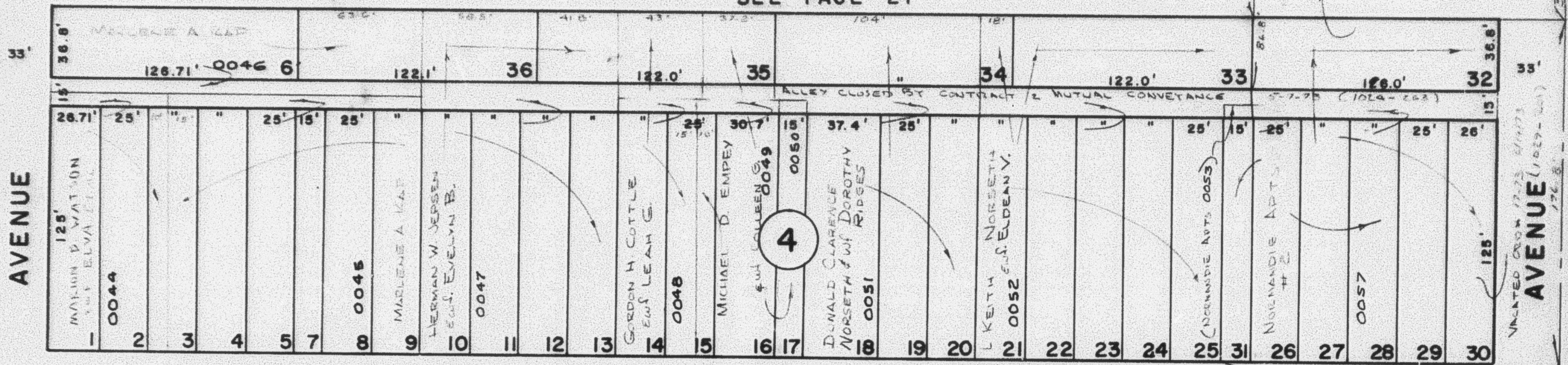
TAXING UNIT: 25

IN OGDEN CITY

PREFIX: 12-022

SCALE 1" = 50'

SEE PAGE 21

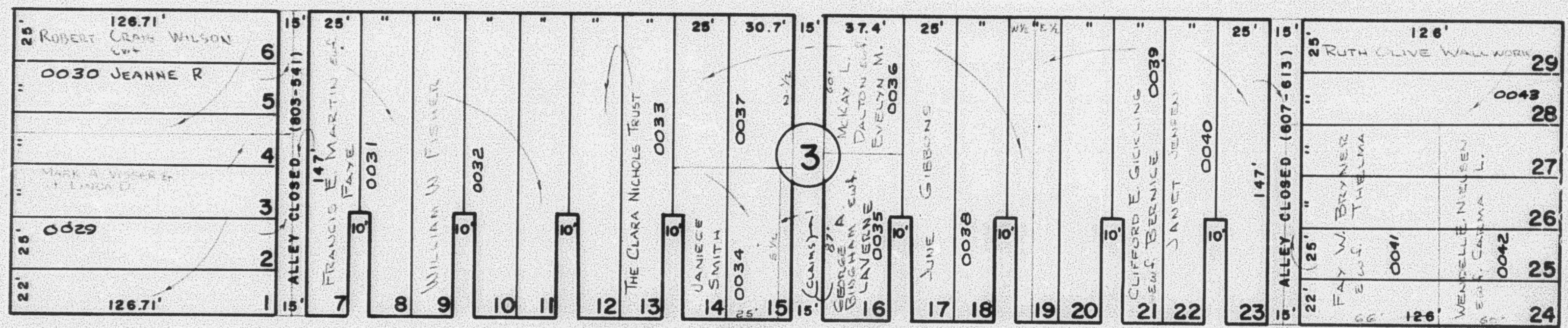


SEE PAGE 56

N. 0° 58' 40" E.
S. 0° 58' E.

1ST. STREET

STREET

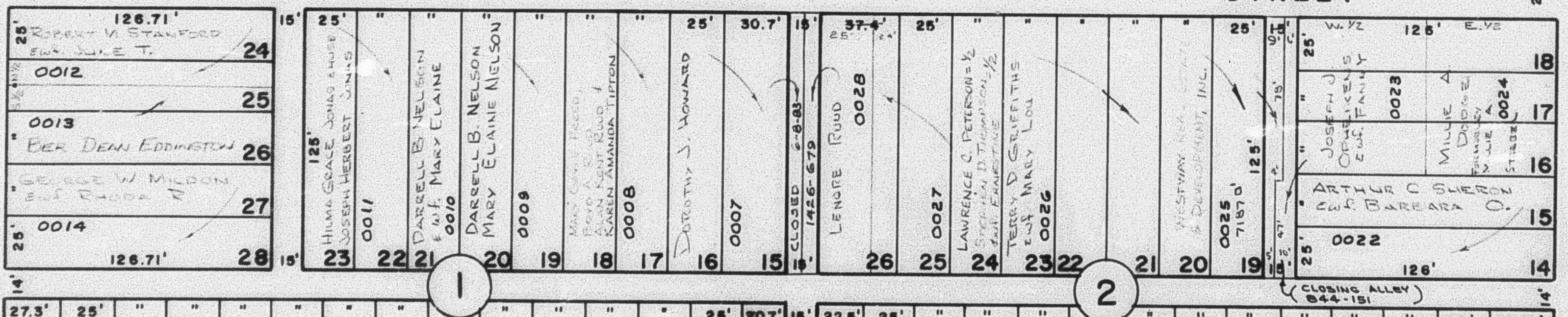


1/4 COR.

ADAMS

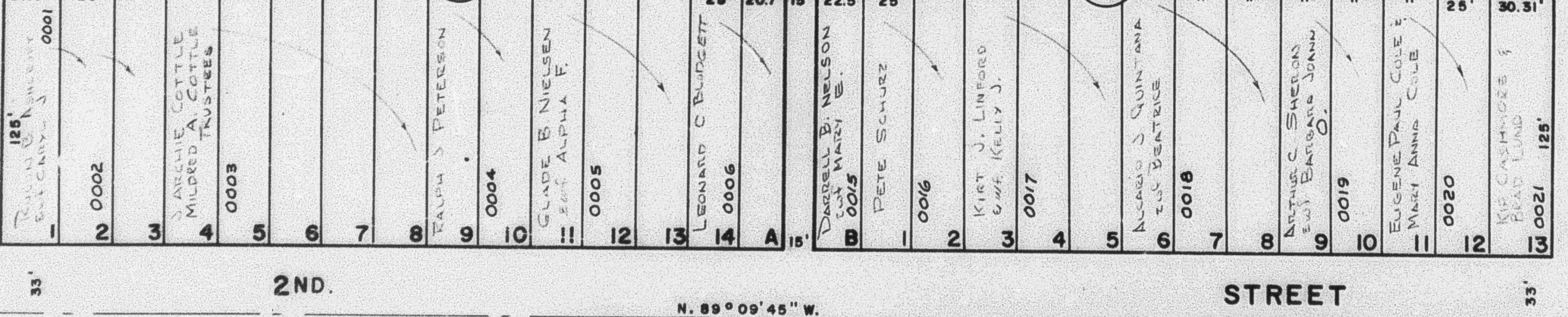
COOK STREET

STREET



2ND. STREET

STREET



12

SEE PAGE 23

W.F.J. 11-70

SEE PAGE 29-3

JEFFERSON